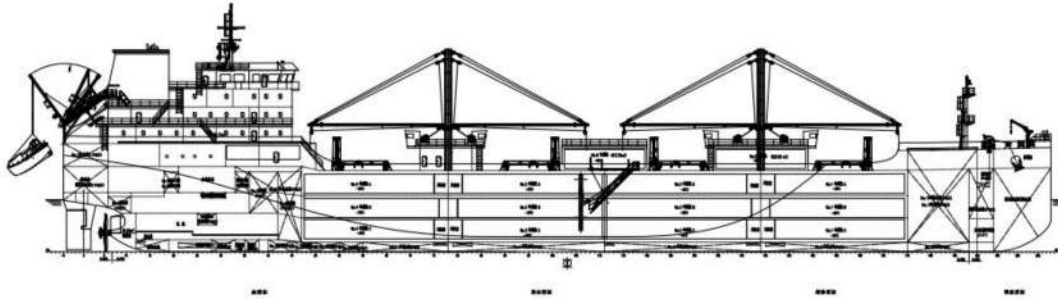


# ECO REEFER CARRIER



Devliery 2026 March, April ,September

Class CCS, Notation ★CSA Refrigerated Cargo Ship; CRS (No.1,No.2,No.3,No.4 Hold-35°C No.5, No.6 Hold -55°C, 32 °C max, Sea Water ), PSPC(B), Ice Class B; Loading Computer (S,1,D); In-Water Survey  
 ★CSM BRC; G-ECO(CDx, BWM(T)) Scrub Fitted

LOA 146m  
 LBP 143m  
 BM 22m  
 DM 12m  
 Draft 7.7m

Complement 31+1P

No	name	temperatur	capacity	cooling
1	1A	-35°C	1323m3	Forced air
2	1B/C	-35°C	2057m3	Forced air
3	2A	-35°C	1412m3	Forced air
4	2B/C	-35°C	2493m3	Forced air
5	3A	-35°C	1412m3	Forced air
6	3B/C	-35°C	2949m3	Forced air
7	4A	-35°C	1359m3	Forced air
8	4B/C	-35°C	2321m3	Forced air
9	1# deck reefer	-55°C	613m3	Coil+shaft fan
10	2# deck reefer	-55°C	500m3	Coil+shaft fan
	Total Capacity		15984m3	

Deck Height No.1,2,3,4 no1.2.3.4 2.9m hold square 5000 m2 ,  
 no 5.6 hold square 400m2, deck height around 2.7m

Coolant R507A

Compressor

Asakawa MSC 200L-VWLEFM x 2 sets 381.7kw (-35°C/+35°C)

for no.1.2.3.4 hold - 35 degree

Asakawa MSC1612LS-VWLEFM x 1 sets 63.8kw(-60°C/+35°C)

for deck no.5.6 hold - 55 degree

Asakawa MSC 2016LS-VWLEFM as backup 132.4kw (-60°C/+35°C)

Compressor head Asakawa IP55, insular F

Reefering Speed

70 ton Daily, intake temperature -15 Degree, within 72 Hour - 55 Degree

Seawater Comdensator x 3 sets 173 m2 B100 exchange

AirCooler x 16 stes

Hold A x 8 sets 2 x 32800/16700m3/hr

Hold B/C x 8 sets 3 x 32800/16700m3/hr

M/E MAN 6S40ME-C9.5 Tier iii

MCR 6080 kw at 138 rpm

NCSR5472 kw at 133 rpm

A/E Shaft Generator Genset 800kw

Daihatsu 800 kw x 3 sets

Genset 740 kw x 3 sets

Fuel oil Tank 1480m3

MDO Tank 410m3

Fresh water Tank 410m3

Speed Consumption

HFO 380 CST, (main~aux engine),Fuel comsptions: abt.13.8mtons(M/E) with shaft generator at full loaded,ship speed 15.0kn

